



Plaza Park & Historic Mission

San Gabriel

DEVELOPMENT OPPORTUNITIES

REDEVELOPMENT AREA (SITE B)

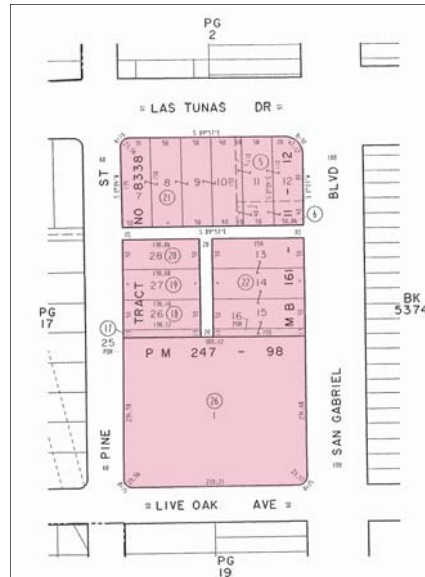
708-730 W. LAS TUNAS DR. & 107-137 S. SAN GABRIEL BLVD

SITE DETAILS

- APN: 5367-018-022, 005,006,018,019,020,021, 026
- 3.69 ACRES

- PARCELS: 8
- FAR AND MAX HEIGHT: CURRENTLY UNDER STUDY

- ZONING: C-1 RETAIL COMMERCIAL
- REDEVELOPMENT PROJECT AREA



LOOKING FOR THAT 100% CORNER? BUSY SAN GABRIEL BOULEVARD AND LAS TUNAS DRIVE OFFER MORE THAN 50,000 VEHICLE TRIPS PER DAY; MIXED USE SITES UNDER DEVELOPMENT LESS THAN A BLOCK AWAY; AND A PREMIER LOCATION A STONE'S THROW FROM THE HISTORIC SAN GABRIEL COUNTRY CLUB, THE SECOND OLDEST IN SOUTHERN CALIFORNIA. THIS 3.74 ACRE SITE REQUIRES ASSEMBLY, AND IS ELIGIBLE FOR ASSISTANCE BY THE SAN GABRIEL REDEVELOPMENT AGENCY. IT MAY BE RECONFIGURED TO CREATE AN EVEN LARGER SITE WORKING WITH COOPERATING PROPERTY OWNERS AND THE CITY'S REDEVELOPMENT AGENCY.



CITY OF SAN GABRIEL

AND

SAN GABRIEL REDEVELOPMENT AGENCY,

ECONOMIC DEVELOPMENT

425 S. MISSION DRIVE
SAN GABRIEL, CA 91776
626.308.2800

CONTACT: JENNIFER DAVIS EXT . 4630

JDAVIS@SGCH .ORG

WWW.SANGABRIELCITY.COM

Rediscovering *PLACE* in San Gabriel

